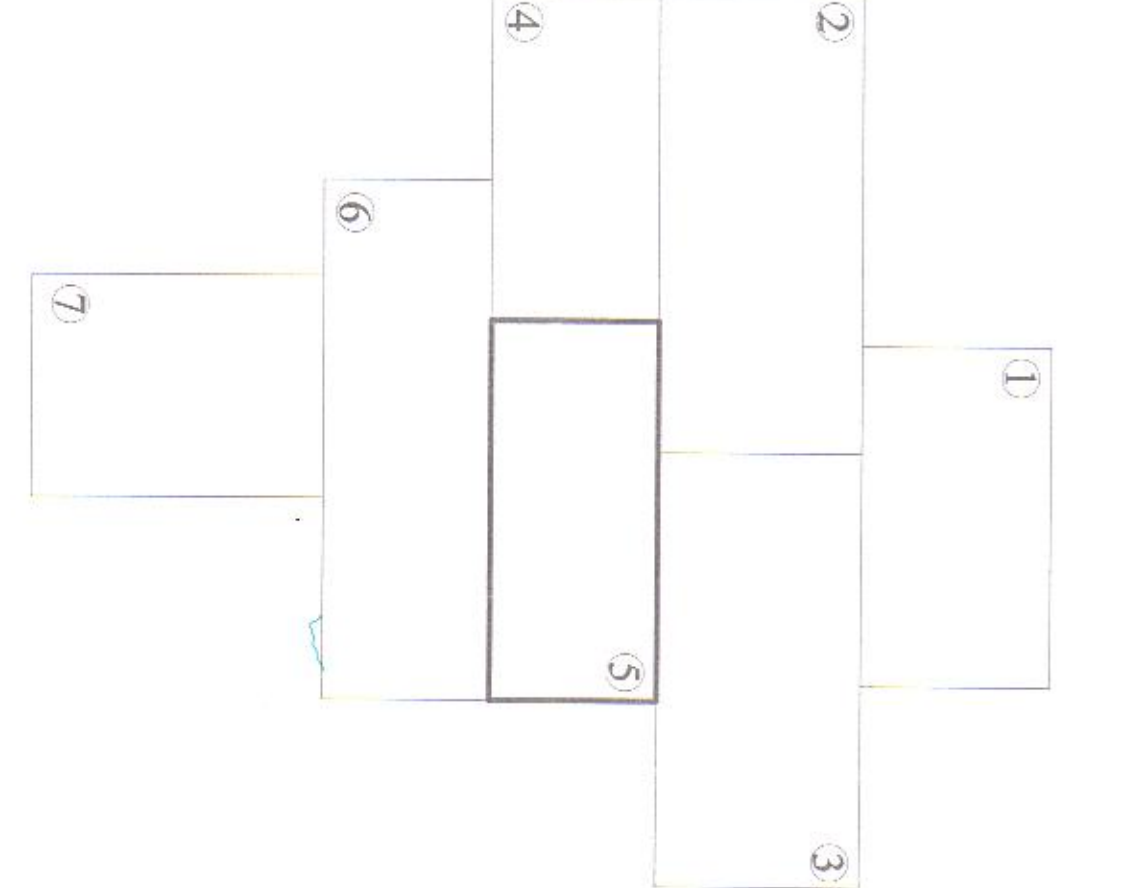
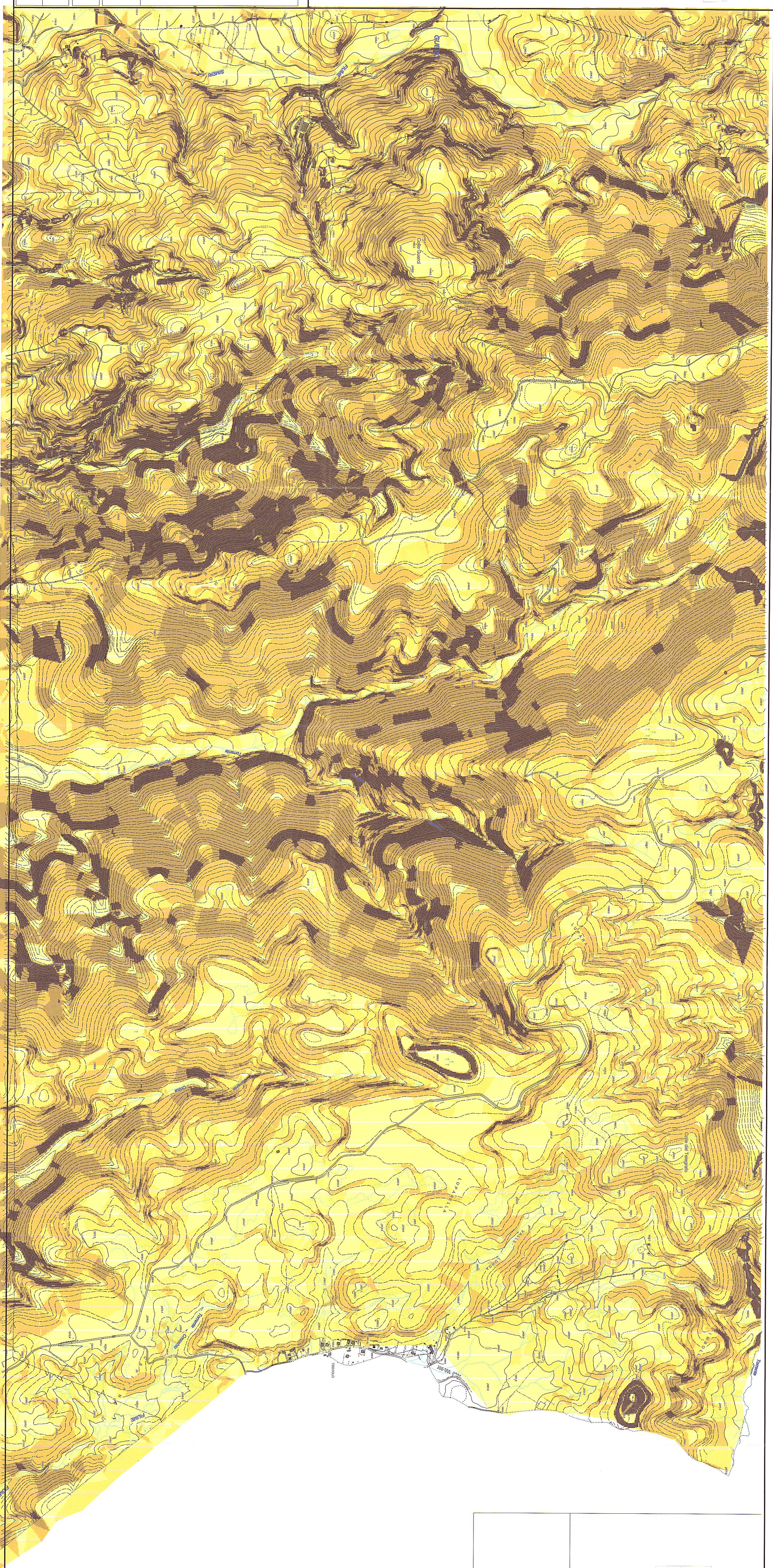
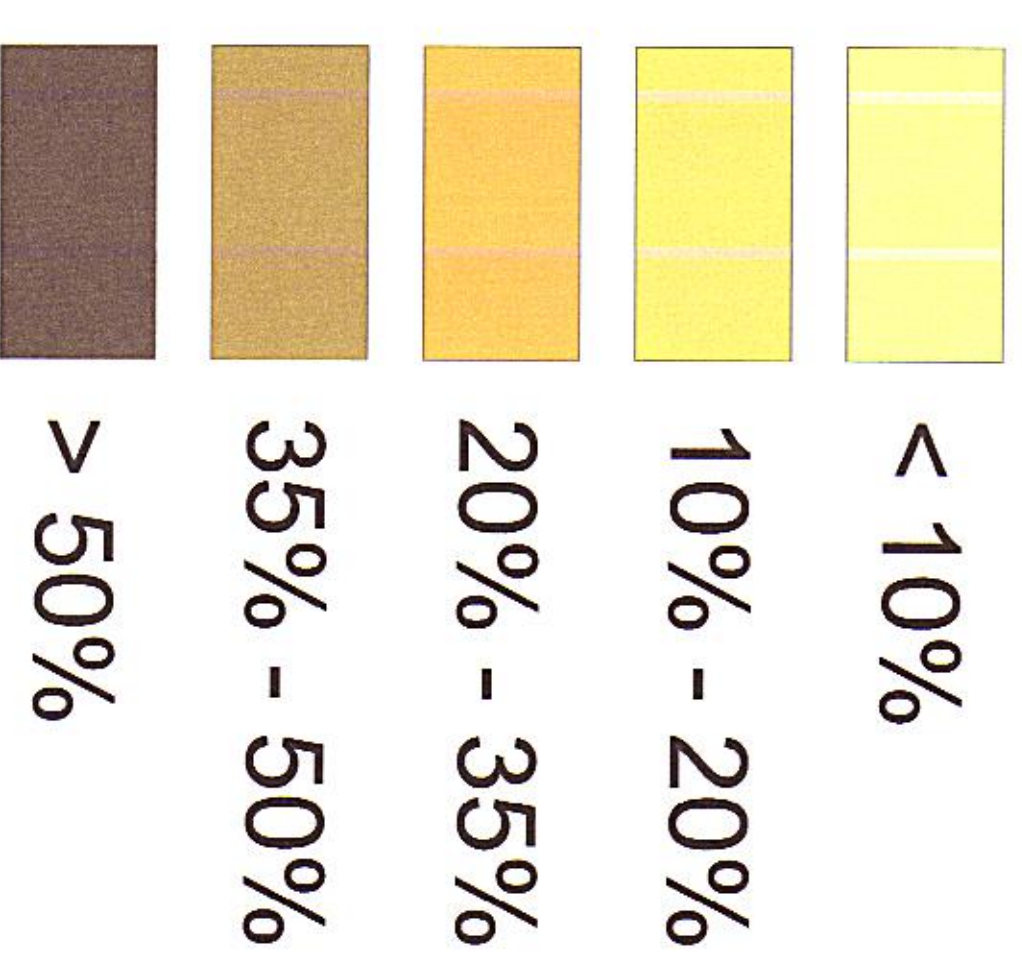


CLASSI DI PENDENZA



COMUNE DI TAVERNA
Provincia di Caserta



Piano Strutturale Comunale
Documento Preliminare
STUDIO GEOMORFOLOGICO

Autore: **F2.5** Carta Geometrica
Colla: Guerzi - Ronchini - Simmerina

PROGETTISTI
Aut. Arch. Min. 1/10000
Aut. Arch. Min. 1/10000
Aut. Arch. Min. 1/10000

